

[www.ecoxax.com](http://www.ecoxax.com)

**ECOAX**  
DIGITAL DESIGN PARTNER

A COMPLETE BIM & CAD  
SOLUTION PROVIDER

Ecoxax is a drafting service firm delivering high quality BIM & CAD drawings & models to Architectural, Engineering & Construction firms. Our team has successfully executed projects in the Middle East, Australia & India

## COMPANY PROFILE 2020 - 2021





## WHO WE ARE ?

We are a group of BIM & CAD professionals with long term experience in the world best international consulting & contracting firms.

Our team involves highly talented individuals with deep understanding of latest technology & global construction standards.

## WHAT WE OFFER?

As a reliable BIM partner of your firm, we offer comprehensive range of Building Information Modeling (BIM) & CAD Drafting services.

We also cater onsite deployment services to the client, serving all size of companies by providing them BIM Managers, Coordinators & Technicians both for BIM & CAD.

Our professionals collaborate directly with your design team to understand & analyze the requirements closely, to deliver a quality & accurate product within stipulated time frame.

Our professional team provides solution for any challenges in BIM & CAD projects of any scale under any sector.

## OUR VISION

We aim to become top BIM & CAD service provider for Architectural, Engineering & Construction firm by Delivering high quality drafting services in house & On Site based on client requirements.

## OUR MISSION

Provide outstanding BIM & CAD Services for design & Construction projects to facilitate coordination by adopting the latest technology & innovations in the area of design, construction & execution.

We, ECOAX are revolutionizing the construction industry by offering BIM & CAD services digitally, elevating the construction process to high accuracy, efficiency, and faster executions. We maintain high-quality standards in all our work arenas like BIM Modeling and CAD Drafting for Architectural, Structural, MEP and Civil projects for our clients



## WHY ECOAX ?

- ▶ Cost effective
- ▶ Customer satisfaction oriented
- ▶ High quality & on time delivery
- ▶ 100% Data security
- ▶ Specialized & Highly experienced
- ▶ Adopting latest technologies & methods
- ▶ Digital delivery

Discover how architecture, engineering, and construction companies are harnessing professional BIM & CAD solutions by us to change the way construction projects are designed, created, and operated. We help firms in diverse industries to operate more productively, precise planning and on-time completion through BIM & CAD solutions. With the advantages of BIM & CAD technology, accurate drawings are created for project coordination to minimize human errors, clarification, communication, time & efforts. The pre-construction views help precisely coordinate and operate the projects much before the start of the construction.

## PROJECT DELIVERY DESIGN PHASES

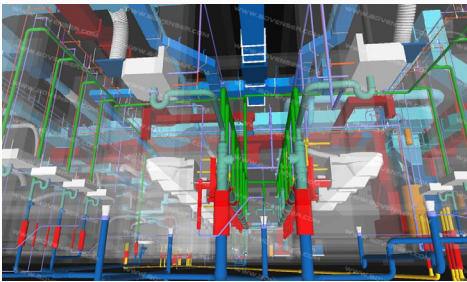
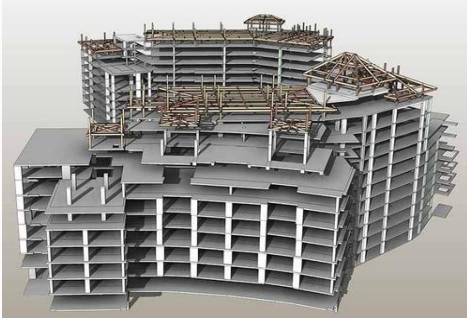
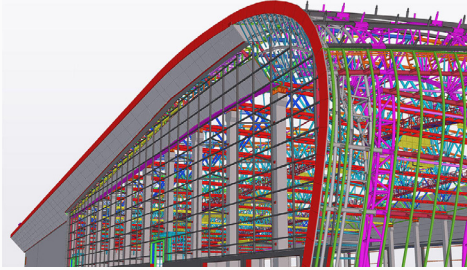
- Concept
- Schematic
- Detailed
- Tender
- Issue For Construction
- Shop Drawing
- As-Built

## SECTORS

- Leisure
- Healthcare
- Hospitality
- Malls
- Educational
- Commercial Building
- Residential Building
- Oil & Gas
- Airport
- Metro
- Sports
- Mixed used development
- High Rise towers
- Mosque
- Industrial

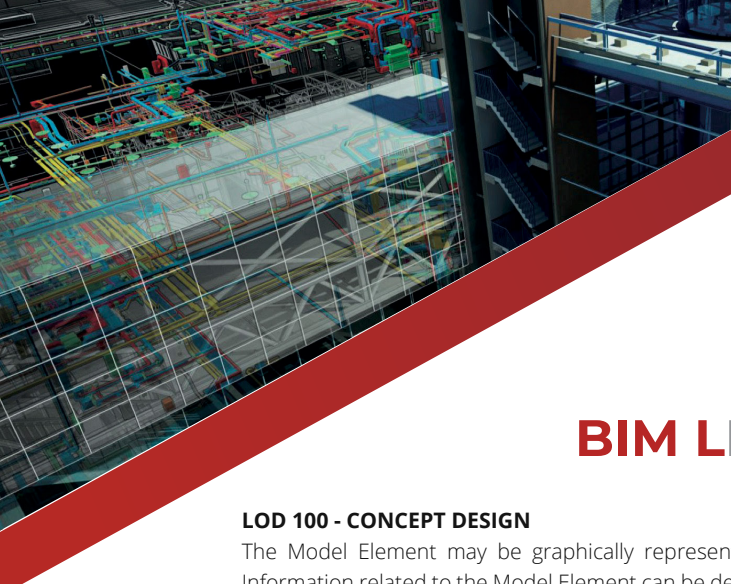
## DISCIPLINE

- Architectural
- Interior design
- Structural
  - Steel
  - Concrete
- Mechanical
  - HVAC
  - Public Health
  - Fire Fighting
- Electrical
  - Lighting
  - Power
- ELV
- Landscape
- Infra-Structure



## OUR SERVICES

- ✓ BIM & CAD Onsite support
- ✓ BIM Modelling as per LOD requirement
- ✓ CAD Drafting
- ✓ BIM Implementation
- ✓ 3D Visualization/ Rendering
- ✓ Presentation Drawings
- ✓ Working Drawings & Details
- ✓ Façade Modelling
- ✓ Navisworks Coordination/clash detection
- ✓ Revit family content development
- ✓ CAD to Revit & PDF to CAD Conversion
- ✓ Shop Drawing Preparation (BIM & CAD)
- ✓ Authority Approval Drawings/GIS for building
- ✓ Schedule, Material, Quantity information
- ✓ e-SPECS for Revit elements
- ✓ COBie data on Revit elements



# BIM LEVEL OF DEVELOPMENT

## LOD 100 - CONCEPT DESIGN

The Model Element may be graphically represented in the Model with a symbol or other generic representation. Information related to the Model Element can be derived from other Model Elements. Any information derived from LOD 100 elements must be considered approximate

## LOD 200 - SCHEMATIC DESIGN

The Model Element is graphically represented within the Model as a generic system, object, or assembly with approximate quantities, size, shape, location, and orientation. Any information derived from LOD 200 elements must be considered approximate.

## LOD 300 - DETAILED DESIGN

The Model Element is graphically represented within the Model as a specific system, object or assembly in terms of quantity, size, shape, location, and orientation. Non-graphic information may also be attached to the Model Element. The project origin is defined and the element is located accurately with respect to the project origin.

## LOD 350 - CONSTRUCTION DOCUMENTATION

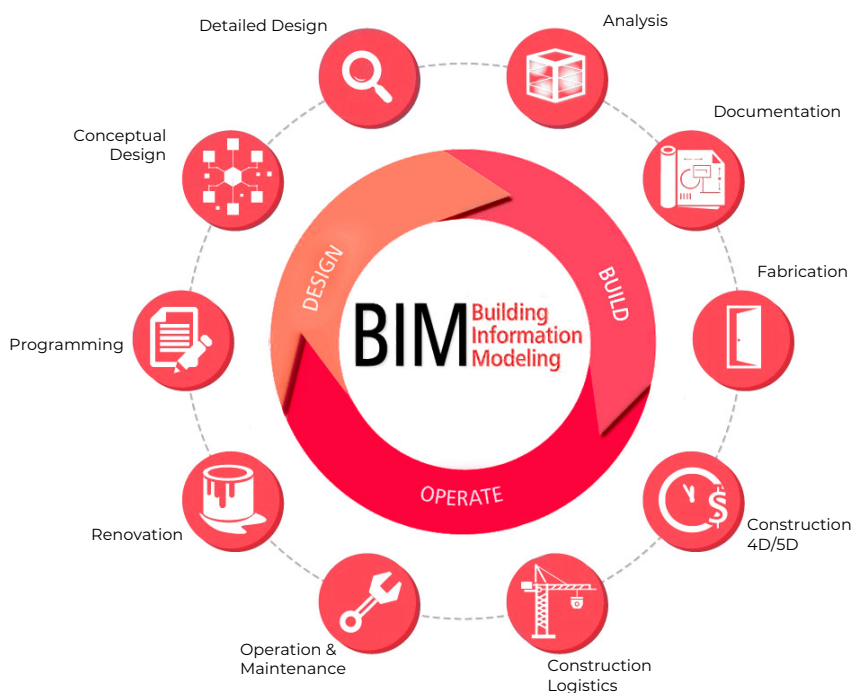
The Model Element is graphically represented within the Model as a specific system, object, or assembly in terms of quantity, size, shape, location, orientation, and interfaces with other building systems. Non-graphic information may also be attached to the Model Element

## LOD 400 - FABRICATION & ASSEMBLY

The Model Element is graphically represented within the Model as a specific system, object or assembly in terms of size, shape, location, quantity, and orientation with detailing, fabrication, assembly, and installation information. Non-graphic information may also be attached to the Model Element.

## LOD 500 - AS-BUILT

The Model Element is a field verified representation in terms of size, shape, location, quantity, and orientation. Non-graphic information may also be attached to the Model Elements



# SOFTWARE PROFICIENCY

- ✓ Autodesk Revit
- ✓ AutoCAD
- ✓ Navisworks
- ✓ Dynamo
- ✓ Sketchup
- ✓ 3D Max
- ✓ Microstation
- ✓ Adobe Photoshop
- ✓ Adobe InDesign
- ✓ Autodesk Design Review
- ✓ Microsoft Office
- ✓ Tekla





# ECOAX

DIGITAL DESIGN PARTNER

📍 #615, Tower 2, Mazyad Mall,  
Mohammed Bin Zayed City,  
28th Street, Abu Dhabi, UAE

☎️ +971 2 5571 629

✉️ [info@ecoxax.com](mailto:info@ecoxax.com)

🌐 [www.ecoxax.com](http://www.ecoxax.com)

